

**TOWN OF MALVERN**  
**RESOLUTION NO. 20-2023**  
**AWARD PURCHASE OF A VACUUM EXCAVATOR FOR THE WATER DEPARTMENT**

WHEREAS, the Town of Malvern has received fund from Alabama Rescue Plan Act for the purpose of Water Infrastructure, and

WHEREAS, through research on the Alabama State bid list and then Sourcewell Cooperative Purchasing two (2) quotes were received for the purchase of a vacuum excavator for the water department, and

WHEREAS, it has been determined that it is in the best interest of the Town of Malvern to purchase the Vermeer Vacuum Excavator Model LPXDT1004 from Vermeer Southeast, in the amount of \$65,000.54 to be paid out of ARPA funds, and

NOW, THEREFORE, LET IT BE RESOLVED by the Mayor and the Council of the Town of Malvern, Alabama as follows:

SECTION 1. That purchase of a Vacuum Excavator be awarded to Vermeer Southeast, in the amount of \$65,000.54.

SECTION 2. That the funds to purchase the Vacuum Excavator be taken out of the ARPA Acct.

SECTION 3. That Tom Vickers, in his capacity as Mayor, and Louise Couture, Municipal Clerk is hereby authorized and directed to execute said contract on behalf of the Town of Malvern.

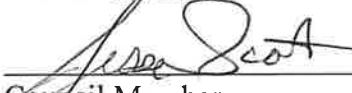
**PASSED, ADOPTED, AND APPROVED ON THIS THE 29th DAY OF August, 2023**



Tom Vickers, Mayor



Council Member



Council Member



Council Member



Council Member

Council Member

  
Louise Couture, Municipal Clerk

**CERTIFICATION:**

I, the undersigned qualified acting Municipal Clerk of the Town of Malvern, Alabama, do hereby certify that the above and foregoing is a true copy of a Resolution lawfully passed, and adopted by the Town Council of the Town named therein, at a Special Called meeting of such Council held on the 29<sup>th</sup> day of August, 2023, and that such Resolution is of record in the Clerk's Office at the Malvern Town Hall.

IN WITNESS WHEREOF, I have hereunto set my hand and affixed the official seal of the Town on this the 29<sup>th</sup> day of August, 2023.



Louise Couture  
Municipal Clerk



The Charles Machine Works  
1959 West Fir Avenue  
P.O.Box PO BOX 66  
Perry, OK 73077  
Phone No : 1-800-654-6481  
Fax No : 580 336 0617  
Email : global@ditchwitch.com

### Sold-to Party Address

TOWN OF MALVERN  
SOURCEWELL MEMBER 119424  
PO BOX 1142  
MALVERN AL 36349

## Quotation

### Information

Quotation No. 20201741  
Document Date 08/18/2023  
Customer No. 514745  
Dealership DITCH WITCH OF ALABAMA  
THEODORE  
PO \_\_\_\_\_  
Created by Todd Miller

### Global Account Price Quote Quote Valid until : 09/18/2023

TAXES ARE AN ESTIMATE AT TIME OF QUOTATION-ACTUAL TAX WILL BE CALCULATED AT TIME OF INVOICING. IF TAXES ARE QUOTED AND THIS IS A TAX EXEMPT TRANSACTION, PLEASE PROVIDE TAX EXEMPT CERTIFICATE OR LEASING DETAILS WITH YOUR PURCHASE ORDER.

FOR MODEL SPECIFICATIONS OR OTHER INFORMATION, VISIT OUR WEBSITE AT [WWW.DITCHWITCH.COM](http://WWW.DITCHWITCH.COM)

Page 1 of 2

### Quotation Details

Qty	Material Description	Unit Price	Discount	Amount
1EA	***** SOURCEWELL CONTRACT 110421-CMW ***** HX30A - HX30A With the following configuration: Debris Tank 500 Gallon Water Tank 200 Gallons Filter Cyclonic Separator Controls Right Hand Traffic Reverse Flow Yes Hose and Tooling 3 Inch HX Boom Jib Water Heater No Options Lance Extension - 48in Options Prospector Digging Lance Options Rear Work Lights Options Trailer Tongue Tool Box Prospector Digging Lance Yes Trailer Tongue Tool Box Yes Hydraulic Oil Standard Color Standard Trailer Jack Hydraulic			

#### Confidentiality Notice:

This quote may contain confidential information. The information is intended only for the individual or entity named. If you are not the intended recipient, please immediately notify us at 1-800-654-6481 to arrange for return of the document.



The Charles Machine Works  
1959 West Fir Avenue  
P.O.Box PO BOX 66  
Perry, OK 73077  
Phone No : 1-800-654-6481  
Fax No : 580 336 0617  
Email : global@ditchwitch.com

### Sold-to Party Address

TOWN OF MALVERN  
SOURCEWELL MEMBER 119424  
PO BOX 1142  
MALVERN AL 36349

## Quotation

### Information

Quotation No. 20201741  
Document Date 08/18/2023  
Customer No. 514745  
Dealership DITCH WITCH OF ALABAMA  
THEODORE  
PO \_\_\_\_\_  
Created by Todd Miller

### Global Account Price Quote Quote Valid until : 09/18/2023

TAXES ARE AN ESTIMATE AT TIME OF QUOTATION-ACTUAL TAX WILL BE CALCULATED AT TIME OF INVOICING. IF TAXES ARE QUOTED AND THIS IS A TAX EXEMPT TRANSACTION, PLEASE PROVIDE TAX EXEMPT CERTIFICATE OR LEASING DETAILS WITH YOUR PURCHASE ORDER.

FOR MODEL SPECIFICATIONS OR OTHER INFORMATION, VISIT OUR WEBSITE AT [WWW.DITCHWITCH.COM](http://WWW.DITCHWITCH.COM)

Page 2 of 2

### Quotation Details

Qty	Material Description	Unit Price	Discount	Amount
1EA	259-1012 - PROSPECTOR EXTENSION, 48"LG W/ FITTING			
1EA	HX30A-PREP - HX30A Vacuum Excavator Prep Ass embly			
1EA	190-2804 - REAR WORK LIGHTS			
1EA	025-1040 - VT12 500 GAL STANDARD TRAILER			
Corporate Account Price				72,095.53
Total Freight				1,164.00
Installation Charge				320.00
<b>Total Amount</b>				<b>\$ 73,579.53</b>

#### Confidentiality Notice:

This quote may contain confidential information. The information is intended only for the individual or entity named. If you are not the intended recipient, please immediately notify us at 1-800-654-6481 to arrange for return of the document.



Vermeer Southeast Sales & Service, Inc.  
6691 Mobile Highway  
Pensacola, FL 32526

QUOTE  
#230821020

Date: 08/21/23

Sales Rep: Adam Zehr

Customer Information:

Town of Malvern  
312 South Main St  
PO Box 98  
Malvern, AL 36349

Delivered to:

Same

Contact Name:  
Phone Number:


Confidence Plus Included: NO

The benefits of Confidence Plus have been discussed  
with me and I am not interested at this time

Customer declined CP coverage

Customer Initial Here: \_\_\_\_\_

Payment method: \_\_\_\_\_

Qty	DESCRIPTION and SERIAL #	Unit Price	TOTAL
1	CVGT1004 - New Vermeer CV573GT, 9995 GVWR, 2x100 Gallon water tanks, 27 HP Kohler EFI Gas engine, 580CFM vacuum pump, Baghouse, Hydraulic pump Debris tank with hydraulic tilt, 3000 PSI @ 4GPM high pressure water system, 5 gallon fuel tank, Anti-Freeze tank, Air Gap, Reverse Pressure, Polymer liner on bottom half of tank, Hydraulically operated full open and locking rear door, 30' x 3" suction Hose and Suction Tool, Water Knife and Celan-up wand	\$ 49,619.53	\$ 49,619.53
1	CVGT3510 - Manual Jack	\$ 347.63	\$ 347.63
1	Freight and Prep - AL	\$ 1,565.00	\$ 1,565.00
Public Utility Contract # 110421-VRM Sourcewell Member ID: 119424  <small>Contract # 110421-VRM</small>			

\*\*\* Price valid for 30 days from date of this quote \*\*\*

THANK YOU FOR YOUR BUSINESS!

TERMS:

All warranties, if any, made with respect to this equipment are those warranties made by the Manufacturer. Dealer makes no warranties express or implied, including, but not limited to, warranties of MERCHANTABILITY AND FITNESS OF A PARTICULAR PURPOSE.

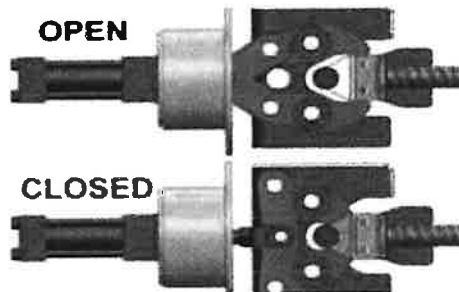
SubTotal	\$ 51,532.16
Tax	
Total	\$ 51,532.16
Less Down Payment	
Balance Due	\$ 51,532.16

Customer Signature \_\_\_\_\_

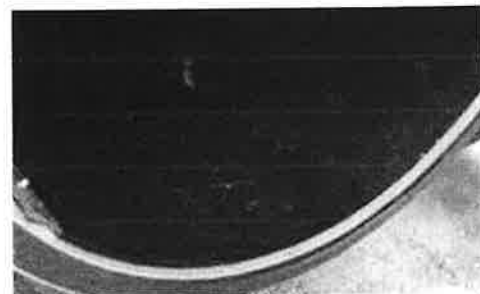
# CV GT VACUUM EXCAVATOR



**.5 MICRON FILTRATION.** Cyclonic filtration separator as well as a secondary filter to clean the air down to .5 microns.



**REAR HYDRAULIC CLAW DOOR.** Rear hydraulic claw door has an over-center locking mechanism for a no-fuss positive lock and unlock.



**POLYMER LINER.** The polymer liner inside the debris tank on the bottom half makes for efficient dumping and cleanout.



**STRONG ARM (OPTION).** With 270-degree rotation, the strong arm supports the weight of the vacuum hose, and the roller head makes handling efficient by allowing smooth, fluid movements and adjustments.



**REVERSE PRESSURE.** Reverse pressure to offload liquids and dislodge debris in hose.



**I BEAM TRAILER.** Units are built from start to finish at our factory, including the trailer which consists of a sturdy I beam construction.



**VERMEER.COM**

**Vermeer**  
  
**EQUIPPED TO  
DO MORE.™**

# CV GT VACUUM EXCAVATOR

## DIMENSIONS - TRAILER

	573 GT	873 GT	1273 GT
Length	228 in (579 cm)	246 in (625 cm)	248 in (630 cm)
Width	93 in (236 cm)	97 in (246 cm)	102 in (259 cm)
Height	89 in (226 cm)	89 in (226 cm)	122 in (310 cm)
Empty weight	4,800 lb (2,177 kg)	5,300 lb (2,404 kg)	7,300 lb (3,311 kg)
GVWR	9,995 lb (4,534 kg)	14,000 lb (6,350 kg)	24,000 lb (10,886 kg)
Trailer axles	(2) 7,000 lb (3,175 kg)	(2) 7,000 lb (3,175 kg)	(2) 12,000 lb (5,443 kg)

## ENGINE

Make and model	Kohler EFI gas	Kohler EFI gas	Kohler EFI gas
Horsepower	27 hp (20.1 kW)	27 hp (20.1 kW)	27 hp (20.1 kW)
Fuel tank capacity	14 gal (53 L)	14 gal (53 L)	14 gal (53 L)
Enclosure	N/A	N/A	N/A

## WATER TANK

Water tank capacity	200 gal (757 L)	300 gal (1,136 L)	400 gal (1,514 L)
Number of tanks	2	2	2
High pressure pump flow rate	4 gpm (15.1 L/min)	4 gpm (15.1 L/min)	4 gpm (15.1 L/min)
High pressure pump	3,000 psi	3,000 psi	3,000 psi
High pressure hose length	50 ft (15.2 m)	50 ft (15.2 m)	50 ft (15.2 m)
Low water shutoff	Electric	Electric	Electric

## SPOIL TANK

Spoil tank capacity	500 gal (1,892.7 L)	800 gal (3,028.3 L)	1,200 gal (4,542.5 L)
Door type	Hydraulic	Hydraulic	Hydraulic
Tank lift type	Hydraulic	Hydraulic	Hydraulic

## VACUUM

Type of filters	.5 micron	.5 micron	.5 micron
Hose length	30 ft (9.1 m)	30 ft (9.1 m)	30 ft (9.1 m)
Hose width	3 in (7.6 cm)	3 in (7.6 cm)	3 in (7.6 cm)
Vacuum	580 cfm (985 m³/hr)	580 cfm (985 m³/hr)	580 cfm (985 m³/hr)
Vacuum blower type	PD blower	PD blower	PD blower
Vacuum mercury	14 in hg (.4 bar)	14 in hg (.4 bar)	14 in hg (.4 bar)

## CONTROL PANEL

Controls	Curbside	Curbside	Curbside
Gauges	Analog	Analog	Analog

## OPTIONS (FOR ALL)

- Strong arm
- Recirculation kit
- Hydraulic jack
- Air gap
- In-tank washout

Vermeer MVI Solutions, Inc. reserves the right to make changes in engineering, design and specifications; add improvements; or discontinue manufacturing at any time without notice or obligation. Equipment shown is for illustrative purposes only and may display optional accessories or components specific to their global region. Please contact your local Vermeer dealer for more information on machine specifications. Vermeer and the Vermeer logo are trademarks of Vermeer Manufacturing Company in the U.S. and/or other countries. Kohler is a trademark of Kohler Co. © 2021 Vermeer MVI Solutions, Inc. All Rights Reserved. Printed in the U.S.A. Please recycle.





Vermeer Southeast Sales & Service, Inc.  
6691 Mobile Highway  
Pensacola, FL 32526

QUOTE  
#230821030

Date: 08/21/23

Sales Rep: Adam Zehr

Customer Information:

Town of Malvern  
312 South Main St  
PO Box 98  
Malvern, AL 36349

Delivered to:

Same

Contact Name:

Phone Number:


Confidence Plus Included: NO

The benefits of Confidence Plus have been discussed  
with me and I am not interested at this time

Customer declined CP coverage

Customer Initial Here:

Payment method:

Qty	DESCRIPTION and SERIAL #	Unit Price	TOTAL
1	LPXDT1004 - New Vermeer LP573XDT, 9995 GVWR DE-RATED, 2x100 Gallon water tanks, 24 HP Kohler Diesel (Tier 4 Final) engine, 580CFM vacuum pump, Baghouse, Hydraulic pump, Debris tan with hydraulic tilt, 3000 PSI @ 4GPM high pressure water system, Fully enclosed and insulated engine stand (lockable), Anti-Freeze tank, Air Gap, Reverse Pressure, Polymer liner on bottom half of tank, 30' x 3" Suction Hose and ?Suction Tool, Hydraulically operated full open and locking rear door, Water Knife and Clean-up Wand, 30 Gallon Fuel Tank	\$ 63,087.91	\$ 63,087.91
1	LPXDT3510 - Manual Jack	\$ 347.63	\$ 347.63
1	Freight and Prep - AL	\$ 1,565.00	\$ 1,565.00
Public Utility Contract # 110421-VRM Sourcewell Member ID: 119424  Contract # 110421-VRM			

\*\*\* Price valid for 30 days from date of this quote \*\*\*

THANK YOU FOR YOUR BUSINESS!

TERMS:

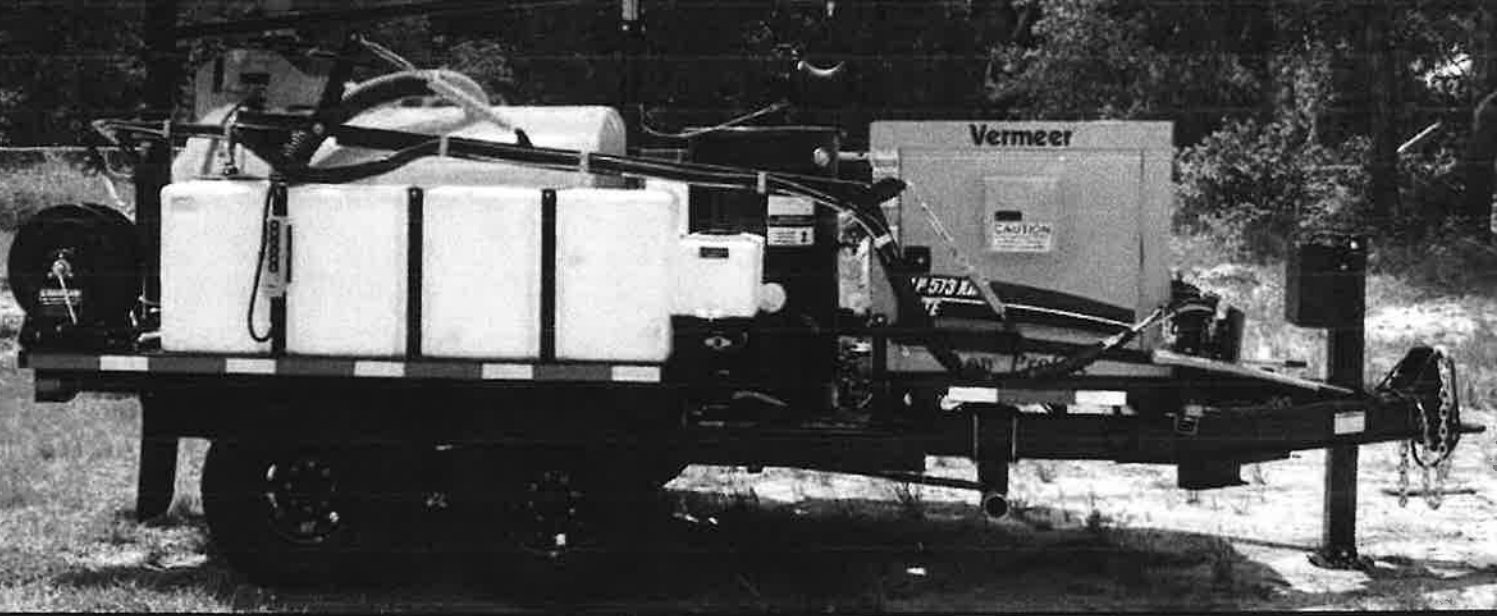
SubTotal	\$ 65,000.54
Tax	
Total	\$ 65,000.54
Less Down Payment	
Balance Due	\$ 65,000.54

All warranties, if any, made with respect to this equipment are those warranties made by the Manufacturer. Dealer makes no warranties express or implied, including, but not limited to, warranties of MERCHANTABILITY AND FITNESS OF A PARTICULAR PURPOSE.

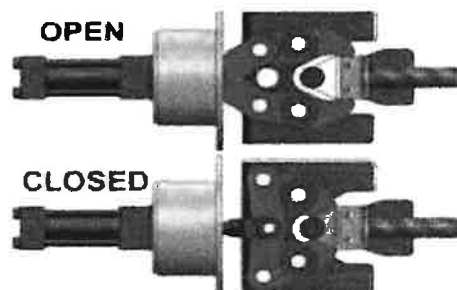
Customer Signature



# LP XDT VACUUM EXCAVATOR



**CVS (CYCLONE 4-WAY VALVE SILENCER) FILTRATION SYSTEM.** .5-micron filtration. The CVS filter housing also contains the 4-way valve for reverse pressure and an oversized silencer for quiet operation. The silencer is located inside the 28-in (71-cm) diameter cyclone.



**REAR HYDRAULIC CLAW DOOR.** Rear hydraulic claw door has an over-center locking mechanism for a no-fuss positive lock and unlock.



**I BEAM TRAILER.** Units are built from start to finish at our factory, including the trailer which consists of a sturdy I beam construction.



**STRONG ARM (OPTION).** With 270-degree rotation, the strong arm supports the weight of the vacuum hose, and the roller head makes handling efficient by allowing smooth, fluid movements and adjustments.



**SIDE HOSE AND TOOLING (SHT) STORAGE (OPTION).** The new SHT package allows for 60 ft (18 m) of suction hose storage on a trailer-mounted unit. This doubles the traditional 30-ft (9-m) hose storage on all other brands.



**FLOWMASTER (OPTION).** The FlowMaster option can be used to hydraulically exercise water valves and hydrants, making sure they will work properly in times of need.



**VERMEER.COM**



**EQUIPPED TO  
DO MORE.**

# LP XDT VACUUM EXCAVATOR

DIMENSIONS - TRAILER		573	573 Heavy	873	873 Heavy	1273
Length		231 in (586.7 cm)	231 in (586.7 cm)	268.8 in (682.8 cm)	268.8 in (682.8 cm)	265 in (673.1 cm)
Width		92 in (234 cm)	97 in (246 cm)	92 in (234 cm)	102 in (259 cm)	102 in (259 cm)
Height		95 in (241 cm)	95 in (241 cm)	95 in (241 cm)	95 in (241 cm)	122 in (310 cm)
Empty weight		6,300 lb (2,858 kg)	6,300 lb (2,858 kg)	7,400 lb (3,357 kg)	7,500 lb (3,402 kg)	9,400 lb (4,264 kg)
GVWR		9,995 lb (4,533 kg) / 12,000 lb (5,443 kg)	14,000 lb (6,350.3 kg)	14,000 lb (6,350.3 kg)	20,000 lb (9,071.8 kg)	24,000 lb (10,886.2 kg)
Trailer axles		(2) 7,000 lb (3,175 kg)	(2) 7,000 lb (3,175 kg)	(2) 7,000 lb (3,175 kg)	(2) 10,000 lb (4,535.9 kg)	(2) 12,000 lb (5,443.1 kg)
ENGINE						
Make and model		Kohler diesel Tier 4 Final	Kohler diesel Tier 4 Final	Kohler diesel Tier 4 Final	Kohler diesel Tier 4 Final	Kohler diesel Tier 4 Final
Horsepower		24 hp (17.9 kW)	24 hp (17.9 kW)	24 hp (17.9 kW)	24 hp (17.9 kW)	24 hp (17.9 kW)
Fuel tank capacity		30 gal (113.5 L)	30 gal (113.5 L)	30 gal (113.5 L)	30 gal (113.5 L)	30 gal (113.5 L)
Enclosure		Yes	Yes	Yes	Yes	Yes
WATER TANK						
Water tank capacity		200 gal (757.1 L)	300 gal (1,135.6 L)	200 gal (757.1 L)	400 gal (1,514.1 L)	400 gal (1,514.1 L)
Number of tanks		2	2	2	2	2
High pressure pump flow rate		4 gpm (15.1 L/min)	4 gpm (15.1 L/min)	4 gpm (15.1 L/min)	4 gpm (15.1 L/min)	4 gpm (15.1 L/min)
High pressure pump		3,000 psi (206.8 bar)	3,000 psi (206.8 bar)	3,000 psi (206.8 bar)	3,000 psi (206.8 bar)	3,000 psi (206.8 bar)
High pressure hose length		50 ft (15 m)	50 ft (15 m)	50 ft (15 m)	50 ft (15 m)	50 ft (15 m)
Low water shutoff		Yes	Yes	Yes	Yes	Yes
SPOIL TANK						
Spoil tank capacity		500 gal (1,892.7 L)	500 gal (1,892.7 L)	800 gal (3,028.3 L)	800 gal (3,028.3 L)	1,200 gal (4,542.5 L)
Door type		Hydraulic	Hydraulic	Hydraulic	Hydraulic	Hydraulic
Tank lift type		Hydraulic	Hydraulic	Hydraulic	Hydraulic	Hydraulic
VACUUM						
Type of filters		.5 micron	.5 micron	.5 micron	.5 micron	.5 micron
Hose length		30 ft (9.1 m)	30 ft (9.1 m)	30 ft (9.1 m)	30 ft (9.1 m)	30 ft (9.1 m)
Hose width		3 in (7.6 cm)	3 in (7.6 cm)	3 in (7.6 cm)	3 in (7.6 cm)	3 in (7.6 cm)
Vacuum		580 cfm (985 m³/hr)	580 cfm (985 m³/hr)	580 cfm (985 m³/hr)	580 cfm (985 m³/hr)	580 cfm (985 m³/hr)
Vacuum blower type		PD blower	PD blower	PD blower	PD blower	PD blower
Vacuum mercury		14 in hg (.4 bar)	14 in hg (.4 bar)	14 in hg (.4 bar)	14 in hg (.4 bar)	14 in hg (.4 bar)
CONTROL PANEL						
Controls		Curbside	Curbside	Curbside	Curbside	Curbside
Gauges		Analog	Analog	Analog	Analog	Analog
OPTIONS (FOR ALL)						
<ul style="list-style-type: none"> <li>• Strong arm</li> <li>• FlowMaster package</li> </ul>		<ul style="list-style-type: none"> <li>• Recirculation kit</li> <li>• Hydraulic jack</li> </ul>	<ul style="list-style-type: none"> <li>• SHT package</li> </ul>			

Vermeer MV Solutions, Inc. reserves the right to make changes in engineering, design and specifications; add improvements; or discontinue manufacturing at any time without notice or obligation. Equipment shown is for illustrative purposes only and may display optional accessories or components specific to their global region. Please contact your local Vermeer dealer for more information on machine specifications. Vermeer and the Vermeer logo are trademarks of Vermeer Manufacturing Company in the U.S. and/or other countries. Kohler is a trademark of Kohler Co. © 2021 Vermeer MV Solutions, Inc. All Rights Reserved. Printed in the U.S.A. Please recycle.

